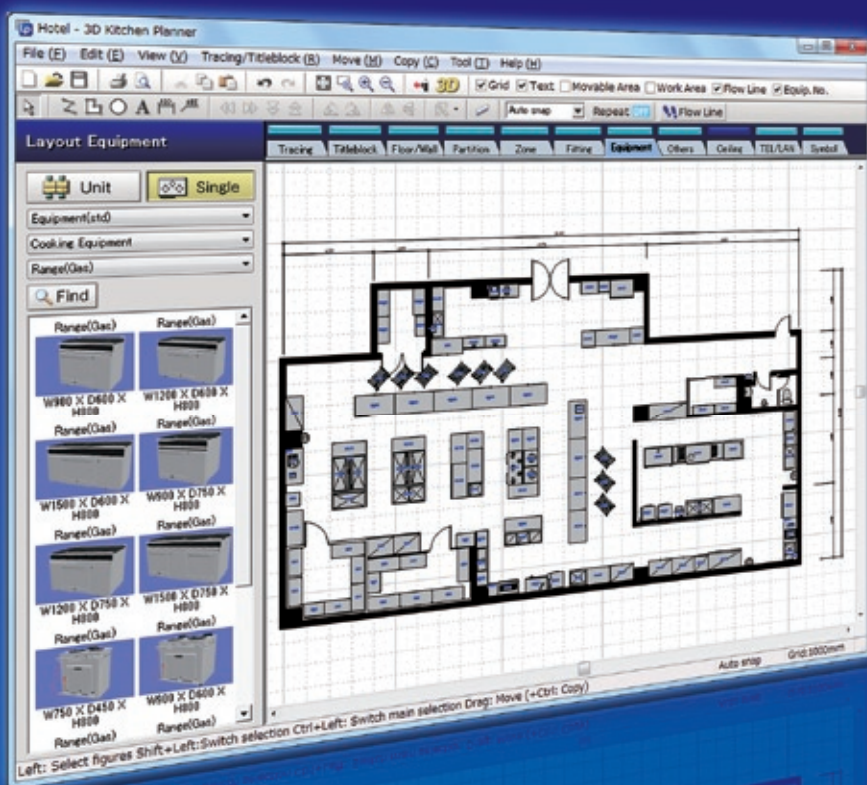


MEGASOFT®

**2D** **3D** **Schedules**

# 3D Kitchen Planner

Commercial Kitchen Planning Software



Parts Schedule

Line	Item	Quantity	Unit	Material	Dimensions	Notes
1	Ref. Fridge	1	EA	1200	675	1800
2	Shelf	2	EA	400	400	1800
3	Sink/Drain/BS	2	EA	750	600	1500
4	Water Heaters	2	EA	350	200	810
5	Stockpot Range	2	EA	645	650	805
6	Table Range(Gas)	2	EA	705	600	815
7	Fryer(Gas)	2	EA	700	600	1005
8	Worktable(St)	2	EA	450	600	850
9	Table	2	EA	1200	600	1800
10	Oven(St)	2	EA	400	500	350
11	Wall Shelf(St)	2	EA	1200	350	200
12	Storage Cabinet	2	EA	1500	450	600
13	Stove Table	2	EA	550	600	400
14	Oven(Gas)	2	EA	500	500	150
15	Cabinet Table	2	EA	1200	600	800
16	Cabinet Table	2	EA	850	600	800
17	RiceCooker Table	2	EA	600	740	950

- **Show customers the kitchens of the future quickly and efficiently.**
- **Give customers professional kitchens with more productivity and comfort.**
- **Increase customer satisfaction.**

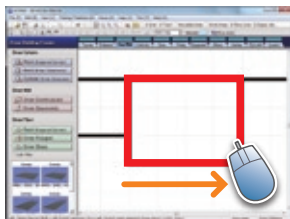


## LP Simple drawing

Draw walls and floors in one of three ways:

1. **Freehand**
2. **Trace import graphics (DXF/JPG/BMP)**
3. **Set individual object dimensions**

Makes drawing easy and simple for trained CAD users and novices alike!



## LP Visualized presentation

Plans can be presented with 3D views and walkthrough movies rather than simple 2D layout images. These 3D view formats (JPG/BMP) can be exported, and solutions of several types can be printed out. A single click turns 2D data into a 3D view.



## LP Speedy layouting

When placing doors, windows, hatches and equipment on floors, the user can choose objects from the parts pallet and position them using functions such as rotate and stretch. Plan data can also be exported to a variety of formats (DXF/JPG/BMP) and printed out to fit any sheet size.



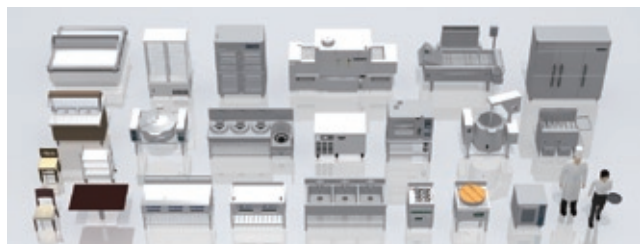
## LP Attractive texture simulation

The colors and textures of interior materials can be changed in the 3D window on the screen, and users can also create their own original textures. The software can be used on notebook PCs, allowing easy presentation to clients.



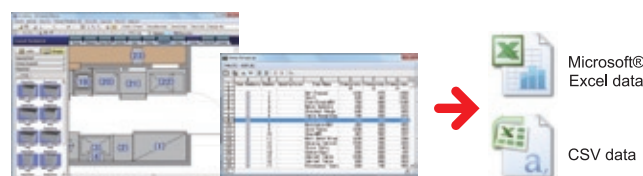
## LP Over 2,500 preset 3D objects

The program includes 3D object models of over 2,500 general products. The properties of these objects (size, name, model no., price and other specifications) can be set after placement in the layout, and also appear in equipment lists.



## LP Timely and useful lists(schedules)

Equipment lists and estimates produced can be automatically retrieved and exported to a spreadsheet.



Item numbers can be sorted as desired, and the changes are reflected in the 2D drawing.

## LP High flexibility for professional use

Professional kitchens need customized equipment for reasons of hygiene and efficient space design. **3D Kitchen Planner** lets you design tailor-made equipment such as work tables or sinks to meet the needs at hand.



## LP Convenient Dongle Protection System

3D Kitchen Planner uses a USB-type Dongle Protection System, allowing the software to be used on different PCs within the same office under a single license. It can also be used on notebook PCs for presentations to clients. This is a very economical and convenient system.



## Optimage® For more photo-like imaging

The image on the left shows a simple printout from **3D Kitchen Planner**. Those below were rendered with higher quality using **3D Kitchen Planner** data through **Optimage**, our Internet ASP service. **Optimage** is supplied as an additional service for **3D Kitchen Planner**.

3D Kitchen Planner also includes Optimage Rendering Points for about 10 A4-size pages. (For continued use, further points can be purchased at about 60 JPY per A4 rendering.)



## System requirements:

OS:	Windows 7/Vista/XP
CPU:	1GHz or higher
RAM:	Windows XP (512MB or higher) Windows 7/Vista (1GB or higher)
HD:	1GB or higher
Display:	1024 x 768 or higher
Others:	Pointing device (mouse) CD-ROM drive (for installation) USB port

Made in Japan